



# OUR SERVICES

ENERGY | MINING | INFRASTRUCTURE

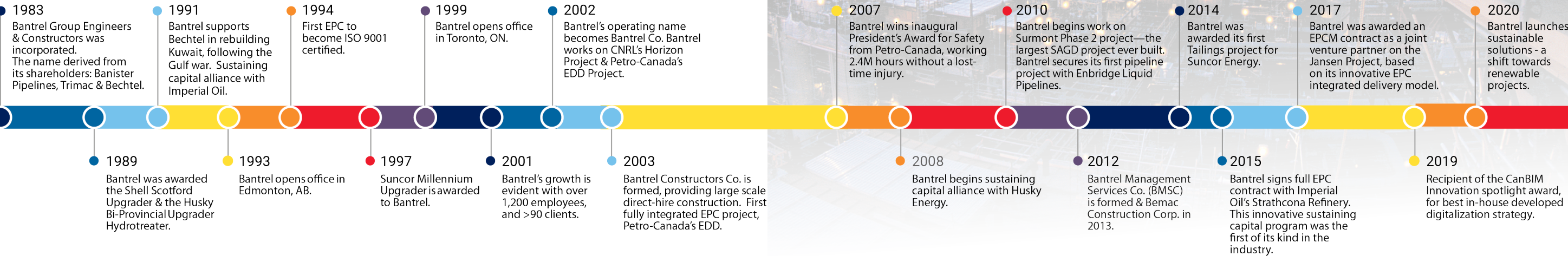




**Bantrel** is a leader in the Canadian marketplace, delivering end-to-end **solutions** across engineering, procurement, construction **(EPC)** & construction management **(CM)**.

## OUR MARKETS

Established in 1983, Bantrel has an extensive history of resource-related projects throughout Canada. We execute EPC/CM for full project lifecycles in the markets of energy, mining & infrastructure. Your project is delivered with the highest degree of safety, quality & efficiency.



## ENERGY

Energy has always been a core market for Bantrel, providing EPC services for large greenfield projects, brownfield projects and sustaining capital programs for over 90 clients in the upstream, midstream and downstream marketplace. Our projects range from \$10k to over \$5B.

Bantrel has kept its focus on the changing energy climate to expand into **sustainable solutions** including carbon capture, bio-energy, renewable energy and other sustainable project developments.

Bantrel specialized areas include: upgrading, refining, SAGD, tailings, petrochemical, LNG facilities (in conjunction with Bechtel), facility modifications, hydrocarbon technology, sustaining capital programs, pipelines, turnarounds as well as tanks and terminals.



A photograph of a mining operation. In the foreground, there are bright yellow flowers. In the middle ground, a large pile of grey gravel or crushed rock sits on a sandy surface. To the left, a conveyor belt system with yellow railings runs across the frame. In the background, a tall, thin structure, possibly a chimney or part of a processing plant, rises into a cloudy sky.

## MINING

Bantrel's EPC/CM experience includes hundreds of mining and metals projects and over one thousand studies globally executed together with Bechtel. Bantrel has delivered integrated solutions for oil sands mining, metal and semi-precious materials recovery and aluminum smelter projects.

Bantrel's clients trust us to provide fit-for-purpose solutions for small, medium and large projects. Our clients benefit from quality deliverables and execution surety, from FEED to construction, in the areas of material handling, mineral processing, pressure oxidation and electrometallurgy for base and precious metals, as well as specialty minerals.

Bantrel's technical capabilities also include solutions to the biggest challenges in tailings management: treating MFT and recycled water.

A photograph of an electrical substation at sunset. Several high-voltage transmission towers are visible, with power lines stretching across the frame. The sun is a bright, glowing orb in the center-left, casting a warm orange and pink glow over the scene. In the background, industrial smokestacks are visible against the sky.

## INFRASTRUCTURE

Bantrel also brings integrated EPC/CM systems and services to infrastructure, including municipal and provincial expertise. Our scopes include rail and transit, water treatment, power generation, substations as well as transmission lines. Bantrel provides a realistic approach to improving power quality and minimizing downtime in order to reduce operating costs and extend the lifespan of the equipment.

Bantrel works with clients on operational and environmental issues throughout the life cycle of their assets, providing facility management and operational efficiencies.



# SUSTAINABLE SOLUTIONS

Bantrel is an industry leader in delivering safe, dependable, high quality services and facilities which advance the sustainability objectives of our clients. This includes our sustaining capital programs and facilities to operate safely and facilitating projects to meet new regulations, conserve energy and reduce emissions.

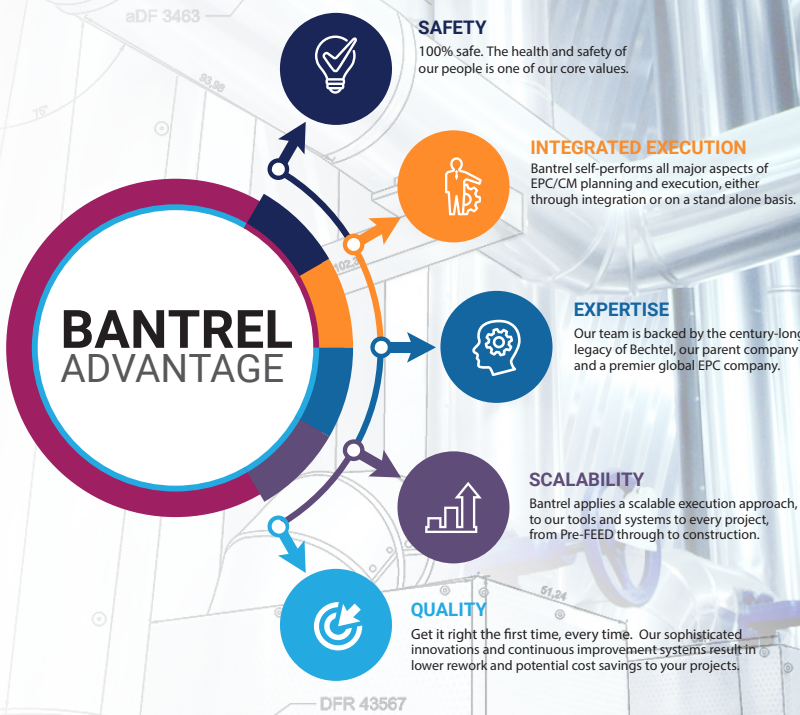
Our [Sustainable Solutions](#) offering enhances our continued development towards new technological innovations and incremental facility improvements that reduce waste or risk to people and the environment. Our focus areas include: carbon capture, emissions reduction, bio-energy, water treatment, solar and thermal.



# Bantrel provides integrated project delivery from engineering through to construction.

## OUR ADVANTAGE

Our team is comprised of seasoned experts and front-line leadership who have experience steering some of the most complex projects in Canada. Our processes are tailored to the client’s unique needs and deliver maximum value.





# Realize **maximum value** of your project through **construction driven EPC services**.

## CONSTRUCTION

By aligning with independently operated construction companies, Bantrel Constructors Co. and Bemac Construction Corp., Bantrel offers direct field labour services on any size of project.

### Expertise includes:

- Industry leading HSE programs;
- Dedicated tradespeople;
- Onsite management;
- Field procurement;
- Materials management;
- Industry leading safety programs
- Offsite fabrication & modularization;
- Constructability support;
- Quality control;
- Innovative labour relations capabilities;
- Commissioning & start-up;
- Turnarounds; &
- Maintenance



## ENGINEERING

Our engineering teams deliver solutions from conceptual development and front-end work through to detailed engineering and site support. Bantrel provides full engineering expertise in the disciplines of: process, mechanical, plant layout and piping, civil/structural/architectural, control systems, electrical, engineering loss management, and electronic document management systems.

## PROCUREMENT

Bantrel builds and manages global procurement processes that are tailored to our client's unique needs and deliver maximum value for their projects. With an annual spend of over \$16 billion, Bantrel and Bechtel have the purchasing power to meet the procurement requirements for your project. Our engineering and construction procurement systems are seamlessly integrated, with automation tools that manage supply from model to the field.

## CONSTRUCTION

Bantrel has the resources to take plans, specifications and concepts from project inception through to operating solutions. Using a proprietary set of execution tools and processes, we can enhance a project's effectiveness in regard to safety, quality, constructability, EPC integration, planning, automation, communication, and other key areas. Our extensive knowledge of constructability principles and modularized building practices deliver extended value to our customers.

## CONSTRUCTION MANAGEMENT

At Bantrel, construction management (CM) is a core strength. Bantrel's CM team is comprised of seasoned experts and front-line leadership who have experience steering some of the most complex construction jobs in Canada. Our CM services include health, safety and environment management, field engineering, quality assurance, contracts management, field procurement, materials management, field IT support, field project controls, constructability, and construction planning.



## INNOVATION

Bantrel is an industry leader, and we recognize the value of innovation to our offering. With the development of Bantrel Innovative Solutions, we are re-imaging the future through our people. With unique and creative offerings including our own in-house developed app - Bantrel ConX, that provides integrated customizable and mobile construction management applications, to 3D, 4D and immersive VR model reviews, Bantrel is focused on methods and technologies that benefit and advance the industries we serve.

Bantrel was awarded the CanBIM 2019 Innovation Spotlight Award, for centralizing and integrating construction data. This delivered a step change improvement to our advanced work packaging program as well as significant gains in our construction productivity execution.

## SUSTAINABILITY

Bantrel's focus on sustainability is evident in our commitment to our people. Our sustainable goals are based on social, economic and environmental pillars, that provide the foundation and direction of our program: to operate with integrity, cultivate opportunity, contribute to society and minimize adverse impacts.



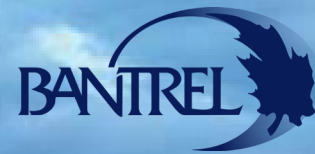
**Your project** is delivered with the highest degree of **safety, quality & efficiency.**

## SAFETY

Our Health, Safety, and Environmental (HSE) management system is a fundamental part of our culture. Our 100% safe philosophy extends to our employees, contractors, and the communities in which we operate. Bantrel's safety performance has been recognized by numerous clients through awards including Petro-Canada's President's Award for Safety, working 2.4M hours without a lost-time injury, and Imperial Oil's Construction LPS Award for two consecutive years.

Our HSE program has evolved into a stand-alone **Safety for Site** offering, providing accurate, comprehensive, and innovative HSE solutions that assist clients with performing work in a safe, efficient, and cost-effective manner. **Safety for Site** can be tailored to the needs of the client and provides real time access to all HSE needs from one source of truth.





Connect with us about your project in [bantrel.com](http://bantrel.com)